

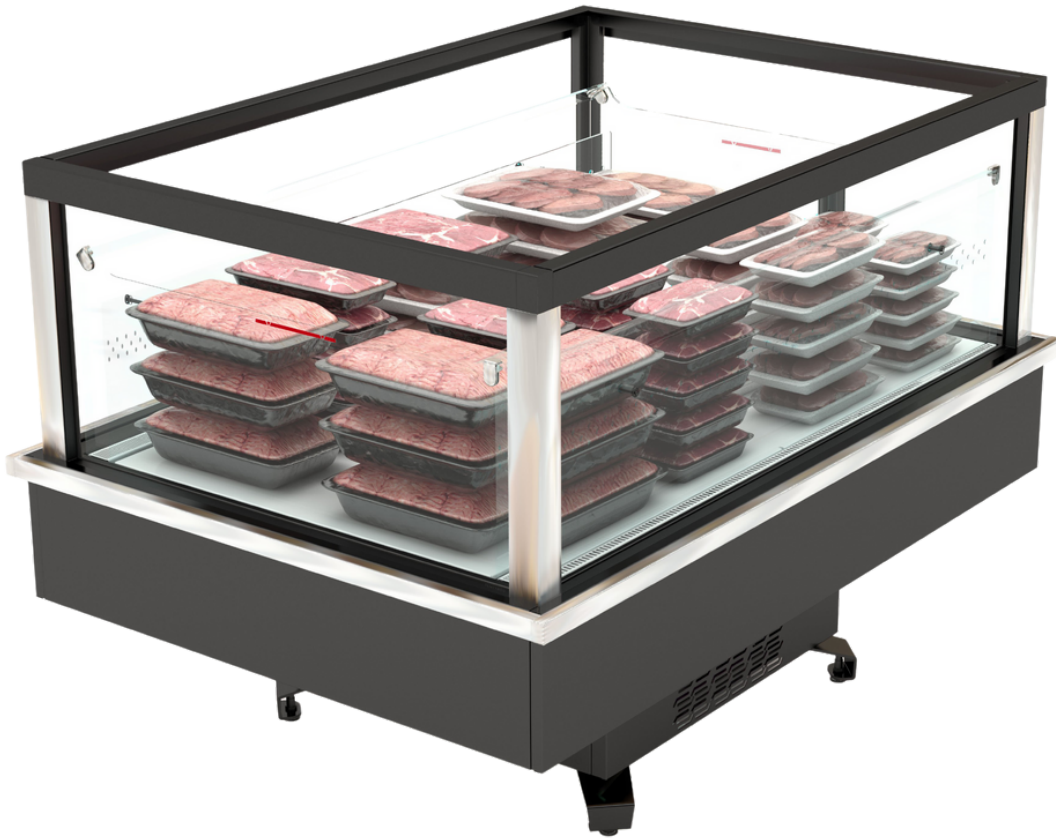
*frost-trol*  
SOLID LINE



PLUG-IN

**AMMER**

Island



## AMMER ND

PIOP|12|70|20|C0|ND|17



PLUG-IN

### Highlights

The presentation of the products is emphasized thanks to its wide perimeter glasses

Wide load capacity inside the cabinet.

Island for the exhibition of refrigerated products. Suitable for the exhibition and sale of meat products (only in the version with doors)

Minimalist design that adapts to current trends in interior design and decoration

Possibility of incorporating sliding doors

### Standard Equipment

R290 Refrigerant

Ventilated refrigeration system

External structure painted in epoxy

Electronic control.

Condensate evaporation tray

White pre-lacquered tank

Panoramic gable ends

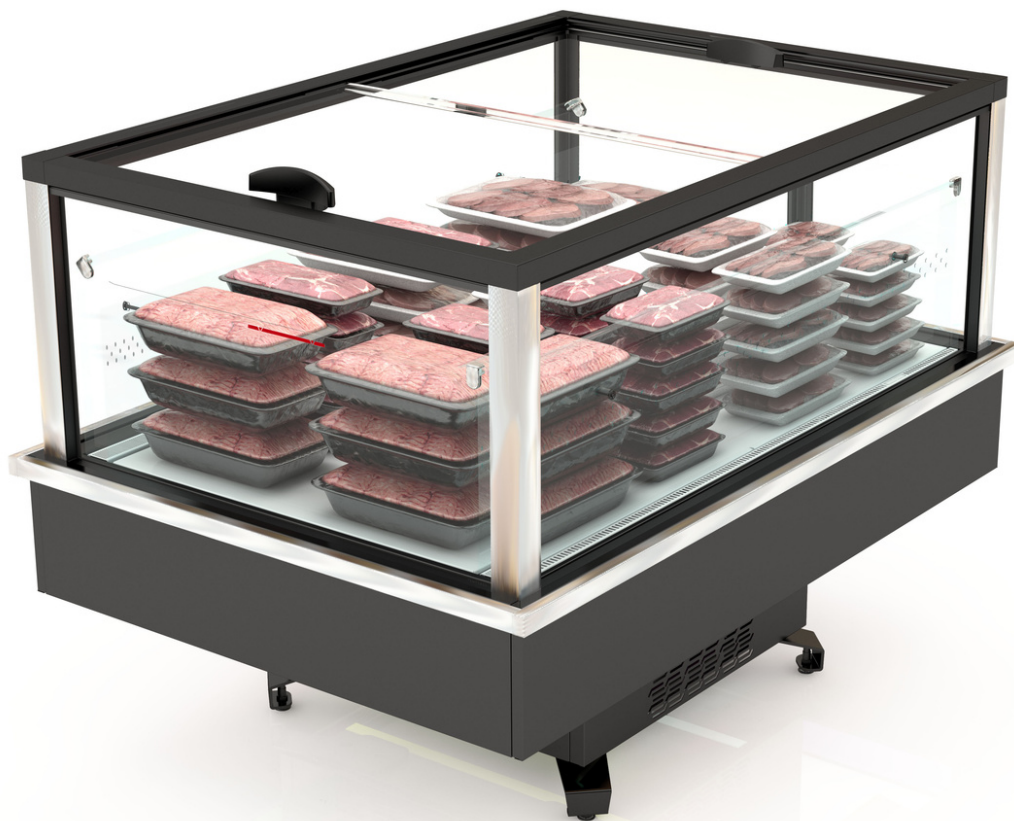
Black thermopans (70 tray)

Stainless steel bumper

Mechanical fans

Fan protection

Plastic packaging and protection on fans



## AMMER SD

PIOP|12|70|20|C0|SD|17



PLUG-IN

### Highlights

The presentation of the products is emphasized thanks to its wide perimeter glasses

Wide load capacity inside the cabinet.

Island for the exhibition of refrigerated products. Suitable for the exhibition and sale of meat products (only in the version with doors)

Minimalist design that adapts to current trends in interior design and decoration

Possibility of incorporating sliding doors

### Standard Equipment

R290 Refrigerant

Ventilated refrigeration system

External structure painted in epoxy

Electronic control.

Condensate evaporation tray

White pre-lacquered tank

Panoramic gable ends

Black thermopans (70 tray)

Stainless steel bumper

Mechanical fans

Fan protection

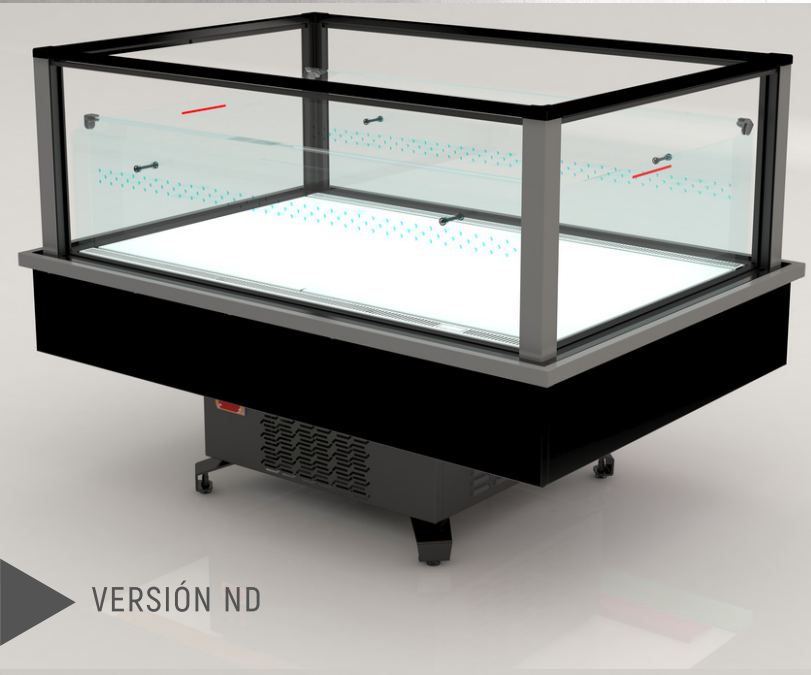
Plastic packaging and protection on fans



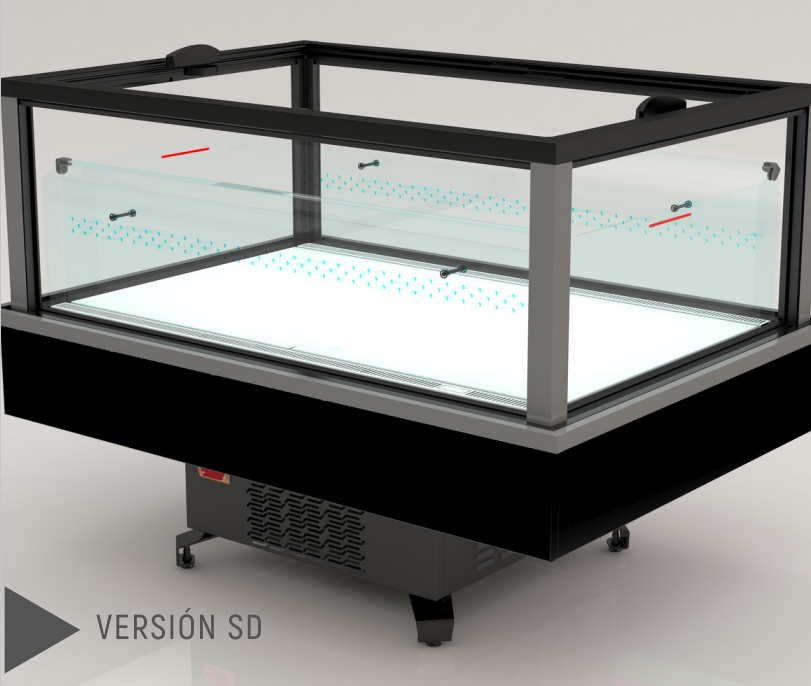
HIGH VISIBILITY OF THE PRODUCT ON DISPLAY

### Options and Accesories

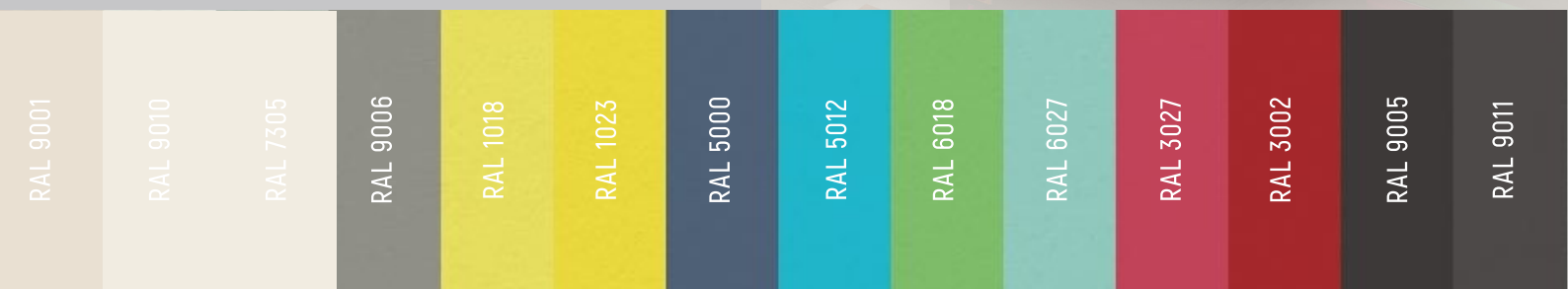
- Sliding doors (SD version)
- Doble front and rear integrated LED lighting - 4000K
- Wood imitation in the external structure (on request)
- Electronic fans
- AISI-304 / AISI-316 components:
  - Suction
  - Impulsión
  - Bandejas
- Priceholder on tray (front and rear)
- Wheels kit
- Carton packaging
- Treated wood packaging
- Treated wood packaging plus



VERSIÓN ND



VERSIÓN SD



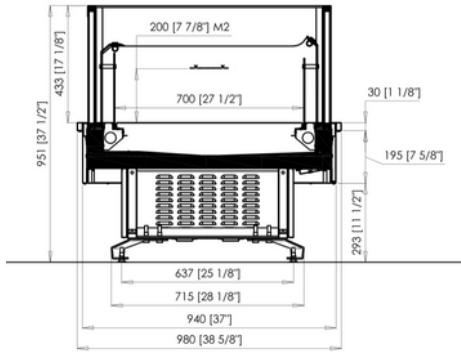
## NO DOORS

## WITH DOORS

### PIOP127020COND17

Available modulations

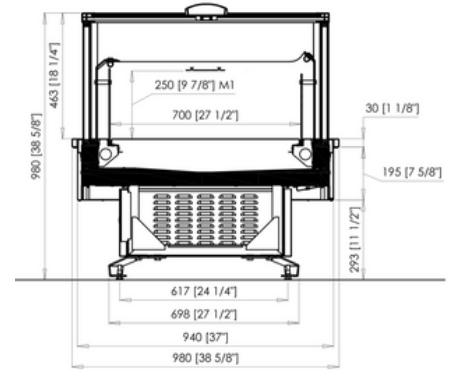
1260



### PIOP127025COSD17

Available modulations

1260



# *frost-trol*



[www.frost-trol.com](http://www.frost-trol.com)



FROST-TROL, S.A  
PLANTA 1  
CV 159 KM 2 CP. 12180  
Cabanes (Castellón) España  
+34 964 34 27 40

FROST-TROL, S.A  
PLANTA 2  
AVDA. DEL CASTELL VELL, 188  
12180  
Castellón - España  
+34 964 34 27 40

FROST-TROL, S.A  
MÉXICO  
AV. PIRULES, 134 B ESQUINA CON AV.  
TEJOCOTES - 54769  
Cuautitlán Izcalli - Estado de México  
+34 964 34 27 40

FROST-TROL, S.A  
FRANCIA  
BUREAU B09 RUE LE BOUVIER  
92340 - BOURG LA REINE  
(PARIS) FRANCE

FROST-TROL, S.A  
DUBAI  
GOLDCREST EXECUTIVE  
JUMERIAH LAKES TOWERS  
(DUBAI) EMIRATOS ÁRABES  
UNIDOS

